



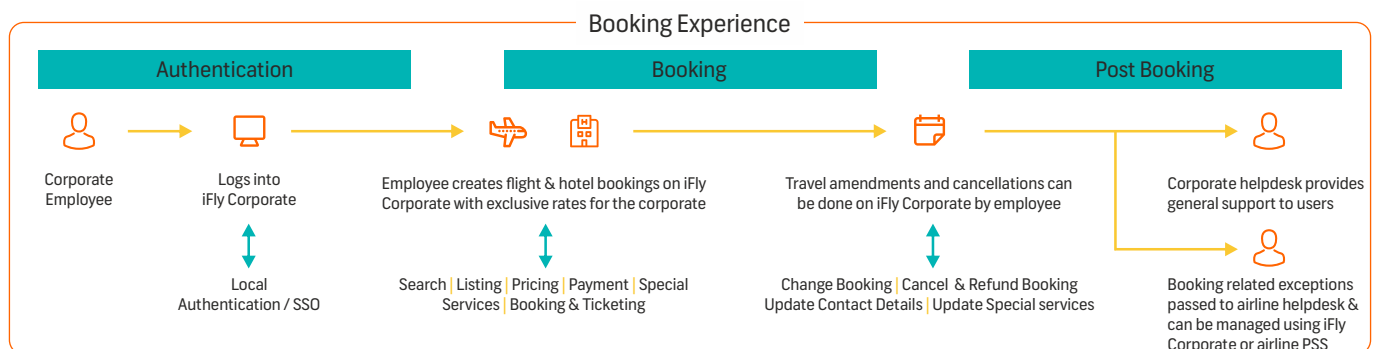
**ibsoftware**

# A travel management solution for airline corporate customers



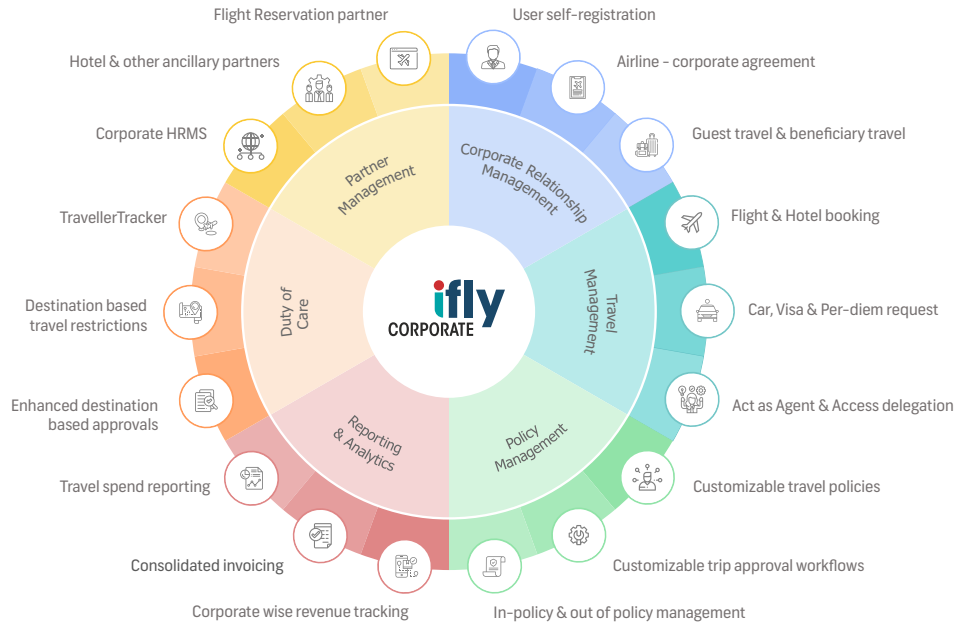
iFly Corporate is a cloud-based self-booking tool enabling an airline's corporate customer employees to book flights, hotels, and other travel ancillaries for business and leisure. The solution integrates seamlessly with an airline's reservation system and a corporation's human resources management system (HRMS) to provide a smooth end-to-

end booking experience. iFly Corporate allows airlines to manage multiple corporate accounts with specific rules and fares for employees and their beneficiaries. The solution also enables corporations to define and manage their customized travel rules and policies to control travel spend with automatic policy enforcement and approval workflows.



# Features

iFly Corporate offers airlines and corporations detailed features to manage and deploy the specifics of their travel agreements. Its highly configurable business rules engine helps airlines control critical parameters, like pricing and ticketing, while giving corporations full control to enforce their employee travel policies and procedures.



## 1. User Management

Traveler profiles can be created in iFly Corporate using different methods depending on the size and infrastructure of each corporation. For small and medium-sized enterprises (SME), iFly Corporate enables employees to self-register. Travelers can easily maintain their profiles, including frequent flyer and passport details and other preferences. Alternatively, Corporate Travel Managers can create profiles dynamically or upload them to the system. For large corporations, iFly Corporate also integrates with HRMSs for automatic profile uploads.

## 2. Travel Management

iFly Corporate lets travel managers retain administrative control while granting employees the freedom to book their travel. The intuitive user interface makes it easy for travelers to search, book, and manage their trips, reducing administrative overheads. Key features include flight, hotel, and car bookings along with visa and per-diem requests, access delegation, and trip approvals.

## 3. Policy Management

Corporate Travel Managers can define comprehensive business rules to manage even the most complex travel policies. Depending on seniority, for example, employees can be grouped and assigned different approval processes for beneficiary nomination, trip sign-off, out-of-policy travel, and booking management.

## 4. Reporting and Analytics

Advanced reporting and analytics capabilities provide full transparency on corporate travel spend. Review enterprise-level performance and improve travel offerings.

## 5. Duty of Care

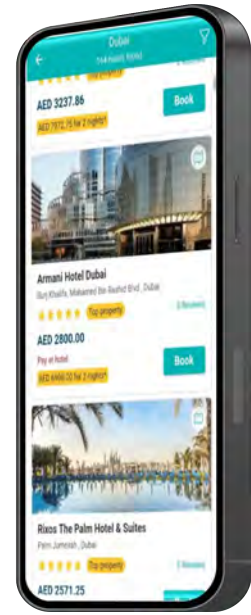
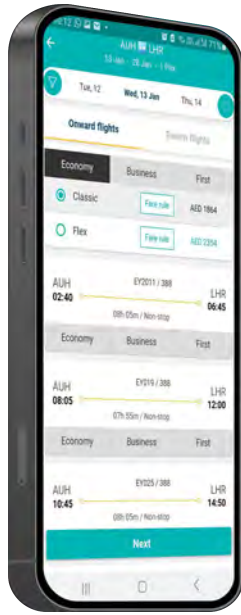
iFly Corporate allows travel managers to identify where employees are traveling and provide support if required. The solution's risk management capabilities easily block booking requests to specific destinations or adapt the approval process for high-risk destinations.

## 6. Partner Management

iFly Corporate's Partner Management module is tightly integrated with airline reservation systems and corporate HRMS to provide a seamless booking experience. Software design ensures the easy decoupling of the core business tier from the integration tier. All interfaces to third-party systems are encapsulated within the data access tier, ensuring that the addition of a new interface to an airline or corporate partner is clean and modularized.

## 7. Mobile App

iFly Corporate's mobile app lets users book, manage, and approve business trips on the go.



## Add-on modules

- **Bleisure Travel:** Extends iFly Corporate travel features for bleisure travel or friends and family travel.
- **FIFO Travel:** Fly-in fly-out or rotation travel capabilities enable companies operating in the energy and resources industry to manage different types of travel efficiently and holistically.

### Airline Benefits

- Accelerated go-to-market capability
- Reduced distribution costs by bypassing intermediaries
- Direct sale of travel ancillaries
- Growth in captive user base and revenue
- Efficient and simple onboarding of corporate customers
- Highly configurable to manage multiple corporate accounts through a single solution
- Iterative solution design to address dynamic requirements

### Corporate Customer Benefits

- Pay-as-you-use SaaS offering, freeing corporates from having to invest in or manage data centres
- Direct relationship with the airline for better deals and discounts
- Travel expense control through corporate policy enforcement
- Increased employee satisfaction by offering closed user group benefits
- Omni-channel access to manage corporate travel
- Comprehensive expense reporting and duty of care management

### Corporate Employee Benefits

- Intuitive “Whole of Travel” solution for travel management
- Efficient travel and expenses approval workflows
- Seamless travel booking experience utilizing digital capabilities across multiple platforms
- Flexible booking solution for different types of travel



## About IBS Software

IBS Software is a leading SaaS solutions provider to the travel industry globally, managing mission-critical operations for customers in the aviation, tour & cruise and hospitality industries. IBS Software's solutions for the aviation industry cover fleet & crew operations, aircraft maintenance, passenger services, loyalty programs, staff travel and air-cargo management. IBS Software also runs a real time B2B and B2C distribution platform providing hotel room inventory, rates and availability to a global network of hospitality companies and channels. For the tour and cruise industry, IBS provides a comprehensive, customer-centric, digital platform that covers onshore, online and on-board solutions. IBS Software is a Blackstone portfolio company and operates from 15 offices across the world.

Further information can be found at <https://www.ibsplc.com>

---



**Redefining the Future of Travel through Technology Innovation**

© 2021 IBS Software | For more information: [sales-support@ibsplc.com](mailto:sales-support@ibsplc.com)

