



# Take control of logistics in the sea.



## What is iLogistics?

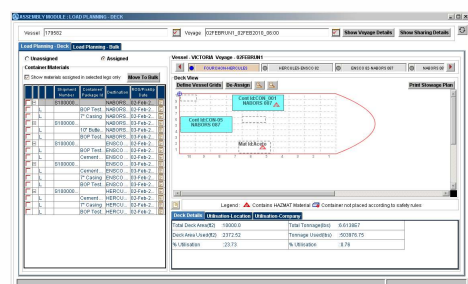
iLogistics is a multi-modal logistics management system designed to manage logistics operations pertaining to exploration and production (upstream) operations of oil and gas companies. Brought to you by IBS, a leading supplier of Travel, Transportation and Logistics solutions for global leaders, iLogistics covers the end-to-end operations of the upstream logistics value chain.

## What is iLogistics Marine?

The iLogistics suite features the Marine system as its integrated marine control center. Deployable as an independent system, iLogistics Marine empowers you with never before features to plan and monitor every aspect of oil and gas logistics in the waters. Be it voyage planning or allocation of pax for voyages, route specification or tracking of vessels, iLogistics Marine puts you in total control.

## Key Benefits

- ✓ Real time tracking of multiple vessels using RFID/GPS technology
- ✓ Assured supply chain continuity through material assembly, load planning and route planning functionality
- ✓ Complete tracking and tracing of materials/containers/resources (including backloads) and business processes
- ✓ Closes the “black hole” between material requisition and final arrival



Efficient planning of on-deck/below-deck stowage  
Through a user-friendly graphical interface

*“Finally, here is a system that offers seamless control over marine & material logistics management through automated route optimization, material tracking, safety compliance management and marine contract management. It seamlessly co-exists with your ERP systems and handles all aspects of marine logistics well. And it not only calculates costs, but also helps in saving your costs.”*

**Manager, Marine Logistics**



## iLogistics Marine and the Oil and Gas Industry

An integral part of iLogistics suite, the iLogistics Marine module offers a single platform to plan, execute and track people and material movement by boats. It provides increased visibility to ensure that logistics operations are carried out efficiently.

**Optimized stowage & route planning:** An intuitive user interface provides the logistics manager a complete view of the forecasted demand to enable efficient planning & operations. Advanced graphical stowage planning ensures optimal utilization of above-deck & below-deck space.

**Enhanced visibility:** 'Vessel Management Dashboard' seamlessly integrates voyage management processes and provides complete visibility of vessel operations. The system allows end-to-end tracking of material in all forms - line items, shipments, bulk and containers - ensuring complete visibility into the SCM lifecycle. The logistics manager is thus empowered to make key decisions to optimize vessel utilization.

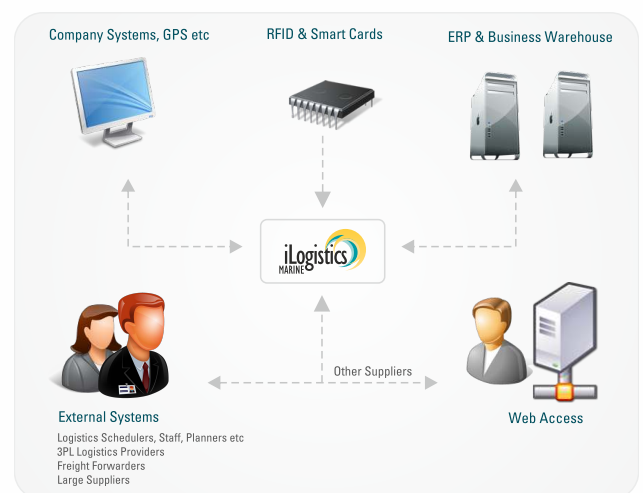
**Effective backload management:** The system supports a comprehensive returns management feature that enables tracking and timely return of materials including high cost rentals. The waste management module integrates with land logistics ensuring the completion of the returns process.

**IMDG compliance:** Compliance checks are fully integrated into the product to ensure adherence to various maritime goods transport rules and regulations. Quarantine checks, UN HAZMAT stowage compatibility checks, multi-level packaging, hazard assessment and response plans play a key role in effective space utilization while handling HAZMAT

**Integration of men-material logistics:** iLogistics has the unique feature that allows linking men and material movement. The system triggers automatic travel prioritization ensuring availability of the right resources at the right place at the right time.

**Other key benefits:** Additional benefits include floating stock management, seamless ERP integration, container certification management and GPS enabled vessel tracking. Readily available global KPI reports enable key stakeholders to make informed strategic decisions.

## Integration Capabilities



Transformational IT Solutions for Travel, Transportation and Logistics

© 2018 IBS Software | For more information: [sales-support@ibsplc.com](mailto:sales-support@ibsplc.com)